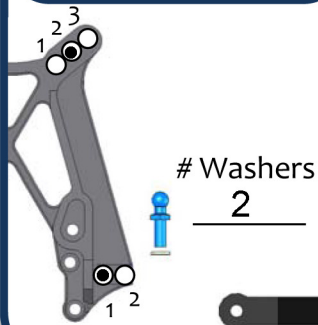




Driver: Clayton Easley Date: 05/2011

Track/Event: Starting Set-Up

Front Suspension

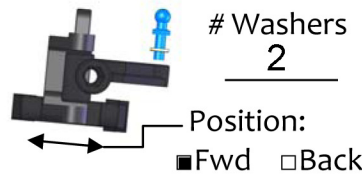
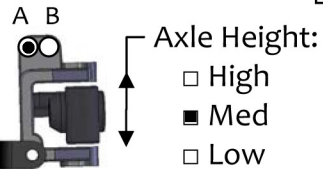


Ride Height: Front Arms Level
 Camber: -1 ° Toe: 0 °
 Ackerman: Forward Back

Servo: Fwd Back

Axles: Trailing Inline

Caster Block:
 20° 25° 30°



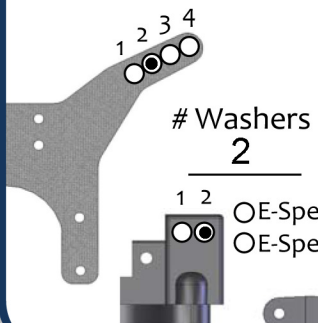
Front Shocks

	Spring	Piston	Oil
AE	Blue	#2	35
Losi	Silver	56	35
Kyosho			

Shock Length: 3 inside limiters

Compressed Length: _____

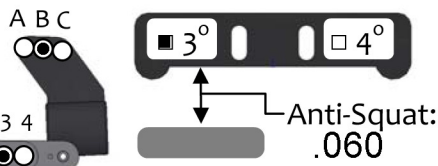
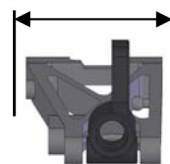
Rear Suspension



Ride Height: CVDs below level
 Camber: -1 °
 Transmission Height: .060 (gold)

Sway Bar: _____

Arm Position:
 Back Mid Fwd



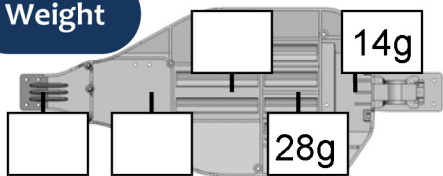
Rear Shocks

	Spring	Piston	Oil
AE	Green	#2	27.5
Losi	Yellow	56	27.5
Kyosho			

Shock Length: _____

Compressed Length: o-ring outside

Weight



Total Weight: _____

F/R Bias: _____ / _____

Notes/Rants/Excuses

DDP Transmission Brace used.

If you use a normal-sized lipo, go up to 30 or 32.5 in the R

Keep the weight placement as close to the center as possible

Battery: Short Losi Pack Motor: SP 13.5, boosted Gearing: 24 / 72